

SIMPLE LIFE

SIMPLE LIFE



Empyrean, Salford, M7

£995 PCM

A Striking new development of apartments in Salford, just a 20 minute walk from Manchester's Deansgate. Inspired by astronomer William Crabtree who made the area his home in the 1600s, Empyrean translates as the highest heaven – and you can call a slice of it your own!

The Crabtree is a beautiful one bed apartment named after William Crabtree, the 17th century astronomer born and bred in Salford. As you walk in the front door, you are met with a large kitchen/ diner fully fitted with appliances as well as handy store cupboard for extra space. This area leads you into the living room towards the back of the apartment. Featuring French windows that open onto your balcony, this is the perfect haven for lazy afternoons and sunsets.

Ground floor apartments will include a Juliet balcony for extra security, whilst the upper floors benefit from larger outdoor spaces. Off the living room, you will find your bedroom with access to a stylish shower room.

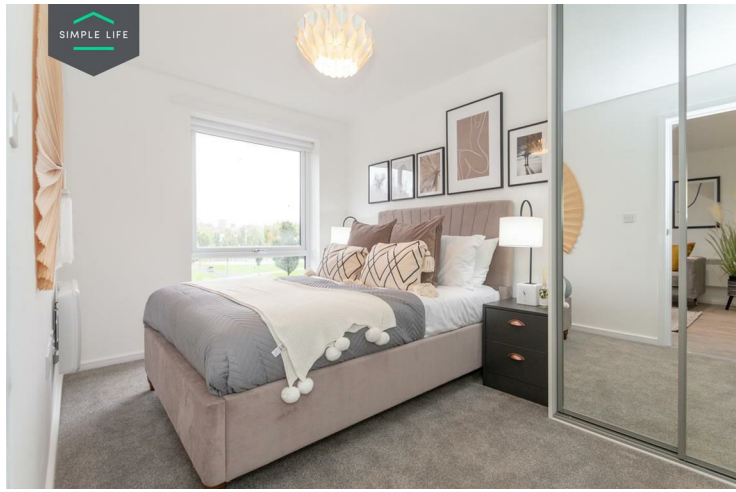
With 298 apartments spread across six blocks either side of the newly renovated Church of Ascension, we have a range of 1, 2 and 3 bedroom properties available including those designed specifically for people sharing.

Situated directly opposite Green Grosvenor Park and a stone's throw away from the river Irwell, these homes have something to offer to all. Ideal for professionals, young families or couples wanting an easy commute without the city centre price tag.

Access to the site is via Lower Broughton Road to the West or Great Clowes Street to the East, with entrances to the blocks on Clarence Street. Postcode M7 1GA will bring you to the area.

Deposit: £1140
Holding Deposit: £220
Council Tax: B
Furnished
Available 15th February 2026





Key Features

- Secure gated parking available on request (fees apply)
- Fridge freezer
- Light wash wood effect flooring
- Modern, white kitchen units
- Light grey carpets in the bedrooms
- Dishwasher
- Washing/drying machine
- Dark ash style worktops
- Fitted wardrobes to main bedroom
- White blinds in bedrooms

Location

